



**Elliotts**  
help you build



Hut 170

AT HENGISTBURY

Welcome Guide

---

Staying at Hengistbury Head is a wonderful experience,  
and we hope you love your break here.

Here are all the details you'll need before and throughout your stay at Hut 170.

## Getting there

**Address:** Hut 170, Mudeford Sandbank, Hengistbury Head, BH6 4EW

No cars are permitted on Mudeford Spit/Beach. Here are the options for getting to the hut.

### Park & Walk...

#### Hengistbury Head: Car park (BH6 4EL)

**Car park** 704 spaces, offering long stay.  
Payment can be made via card, phone or these parking apps:



**Address:** 200 Broadway, Southbourne, BH6 4EL

Check parking charges before you travel via this website:

**W:** [www.bpcouncil.gov.uk/parking/find-a-car-park/hengistbury-head-car-park](http://www.bpcouncil.gov.uk/parking/find-a-car-park/hengistbury-head-car-park)

There is then a 20 minute walk to the Hut, with a few routes, each offering great views of the coast or nature reserves.

The route highlighted is flat terrain and fastest to the Hut.



## Park & Train...

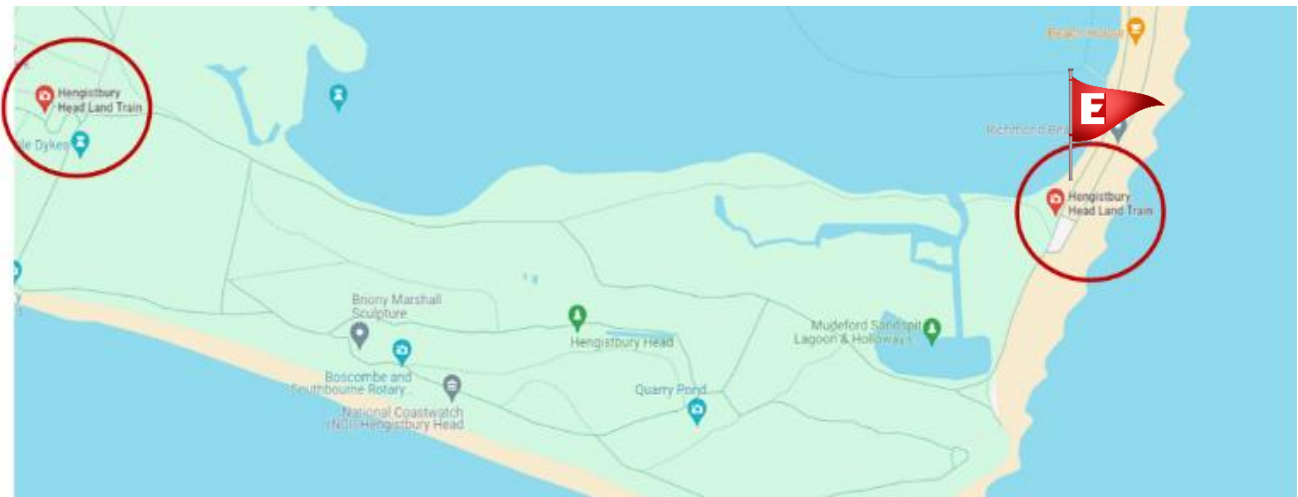
**Land Train** The train runs daily in good weather between April and the end of October and stops directly near the Hut.



Train takes carry-on luggage only.

Tickets available from the guards on the train. Card payments only. Find out more via this website:

**W:** [www.visithengistburyhead.co.uk/Land-Train/land-train-home.aspx](http://www.visithengistburyhead.co.uk/Land-Train/land-train-home.aspx)



## Park & Sail by Ferry...

### Mudford Quay : Car park (BH23 4AB)

**Car park** 419 spaces, offering long stay.  
Payment can be made via cash, card, phone or these parking apps.



Check the parking charges before your travel via this website:

**W:** [www.bcpouncil.gov.uk/parking/find-a-car-park/mudford-quay-car-park](http://www.bcpouncil.gov.uk/parking/find-a-car-park/mudford-quay-car-park)

This is smaller & more expensive to park than Hengistbury Head car park and it's less convenient for getting your luggage across to the hut.

### Mudford Quay: Ferry crossing (BH23 4AB)

**Ferry** The Mudford Ferry operates between Mudford Quay and the Beach at Mudford Sandbank approximately every 15 minutes between 1<sup>st</sup> April to late October.

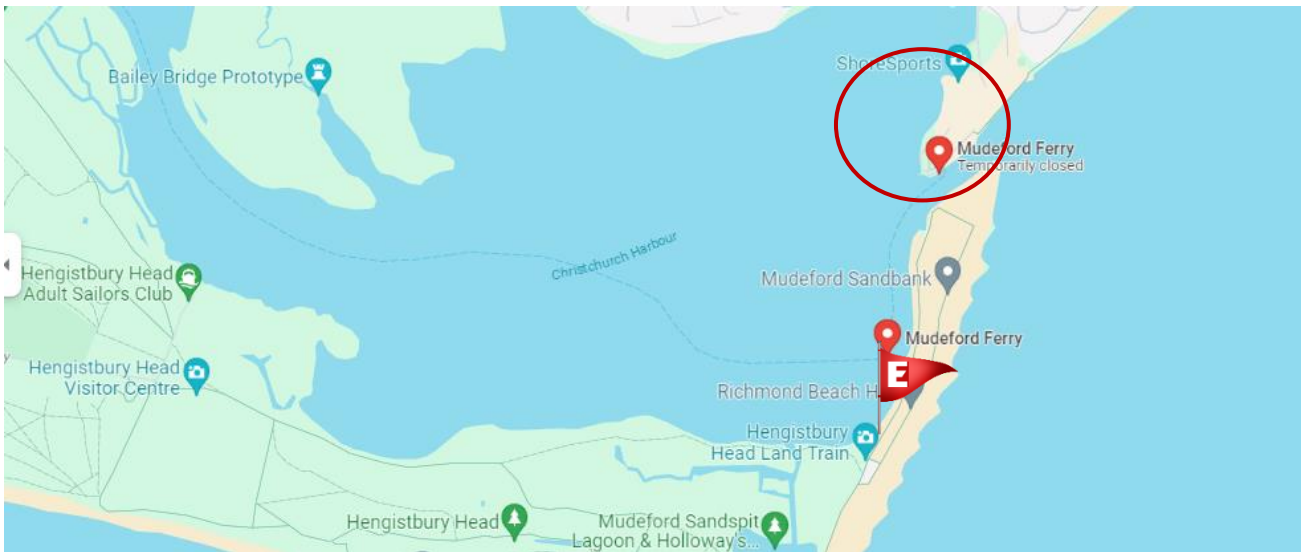


Always check that the ferry is running before you travel this route.

**T:** 07968 334441 | **W:** [www.mudfordferry.co.uk/ferry-times/](http://www.mudfordferry.co.uk/ferry-times/)

**Payment is cash only** and you will have to pay for any excess luggage by cash or by phone using the RingGo app. Call or check the website for ferry prices.

## Mudford ferry location



## Checking in

Your time at the Hut **starts at 1pm** on your first day and **ends at 11am** on the day you leave.

Please respect these times as cleaners or next guests may need to access the Hut after you.

Overnight use is only permitted between 1st March-31st October.



## Unlocking the Hut

### Keys



There is a key in a key lock box located on the beach side of the hut above the gas bottle cupboard.

The **code** will be sent to you prior to your stay.

Replace the key and scramble the lock code at the end of your stay.

All other keys are hanging just inside the beach side door:

**French door key** Opens the double doors on the harbour side of the hut.

**Shower key** Allows you access to the resident's toilet. It also opens the ELSAN chemical disposal unit next door.

**Gas cupboard key** Opens the padlock to the gas cupboard.

**Picnic table key** Operates the padlock for the picnic table chain.

**Bike Lock key** Operates the chain bike lock which is hanging on the inside of the tall cupboard.

## What to pack?

### Things we'd recommend



To make your stay at Hut 170 even more enjoyable, here are some essentials and nice-to-haves that we'd recommend:

#### **Beach trolley**

To help carry your goods from the car parks as it is a 20 minute walk to the hut

#### **Beach games/toys**

Or use the various toys, small buckets & spades in the box under one of the benches

#### **Bath towels**

For sea dips or showering

#### **Bedding**

Sleeping bags & pillows

#### **Charger(s)**

That fits a cigarette lighter/adapter. *(There is a charger in the hut (to the left of the cooker) but you may want to bring an additional one*

#### **Flip flops/shoes**

For the showers

#### **Food & drink**

There are supermarkets in Christchurch you can visit en route. There is also a shop adjoining the Beach House café for small essentials. You cannot order food online and have it delivered to the hut.

#### **Tea towels**

For use in the kitchen

#### **Toiletries**

Toilet paper is provided in the communal toilets, but always good to bring just in case.



## Utilities at the Hut

#### **Water** There is no running water in the hut.



The two water containers can be filled from the standpipe located along the harbour side to the right hand side or on the far side of the toilet block (both about 20 yards).

#### **Electricity**

There is a 12-volt electrical system with roof lights, reading lights, and two sockets, which you can use to re-charge mobile phones.



***You will need a cigarette style charger to use this. There is a charger in the hut (to the left of the cooker) but you may want to bring an additional one.***

The electrical system is run by a solar panel on the roof and a battery, which is on charge all the time.



# Utilities at the Hut

## Gas



The gas may be turned off when you arrive. The best way to check is to try and light the hob. If it's turned off, then you will need to access the gas cupboard.

**2 x gas bottles** are located in the cupboard on the side of the hut.

The access door is the one facing the harbour side and the key is in the hut marked "Gas Cupboard Key".



### Gas taps in OFF position

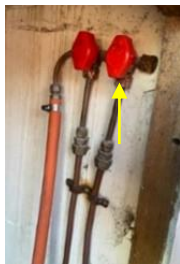
(red tabs are horizontal)



### Gas bottle in OFF position

(small black nob on regulator has the 'off/green rectangle facing up)

Turning of the red taps and regulator will turn the gas off fully.



### Gas taps in ON position

(red taps are vertical)



### Gas bottle in ON position

(small black knob on the regulator has the 'on/red flame facing up)

Turning on the red taps and regulator will turn the gas on fully.



## Replacing the gas bottles

**If a gas bottle runs out during your stay, please replace it straight away.**

- Gas bottles can be replaced at the shop (9am-4pm) at a cost of approx. £50
- Please get a VAT receipt and claim the cost back via the normal expense claim form. You will be reimbursed for the full cost within 7 days.
- There is a wheeled trolley with neon straps (for securing the bottles) to transport the gas bottles in the tall cupboard.

## Gas Emergencies

If there is a smell of gas, turn the gas bottle off overnight.

# The Hut

## Sleeping arrangements

The hut may look small from outside but is spacious enough to sleep 7 people comfortably.

- Ground floor has 3 single beds.
- Open the small cupboard doors under the bed on the righthand side to make a double bed
- The roof sleeping area sleeps 4 and is accessed via the loft ladder.
- Close the loft door at night to avoid accidents



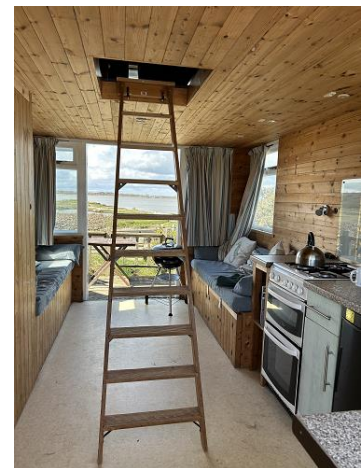
**Leave the ladder down or downstairs (not in the loft!)**

## Toilets

**There is no toilet in the hut.**

You can access toilets:

- To the left as you leave on the harbour side of the hut
- Along the beach
- At the locked resident's toilet & shower block. The key is kept on a hook inside the hut
- **Key code is C1647**



## Showers

**There is no shower in the hut.** The options available are:

- **Outside cold shower:** located on the far side of the toilet block
- **Hot showers:** located at the back of the resident's toilet block on the beach side
- **Key code is C1647**

## Kitchen

Feel free to use all items and supplies provided in the kitchen. There are instructions for the appliances in the blue folder to the left of the cooker.=

**Cooker** The cooker has 4 hot plates, a grill and oven

**Fridge** This is a gas fridge with a small freezer compartment.  
Refer to the instructions to turn the fridge on via the electronic ignition.

To light it, refer to the instructions.

Set the fridge to operate at **Level 3** (there are 5 bars), as this prevents the freezer over-icing.



## The Hut

**Sink**      **Do not put ANYTHING down the sink:** solids or liquids, as there is only a soak away in the sink.

Keep the plug in at all times and use the bowl provided when you wash up.

There is an ELSAN chemical disposal unit at the shower block. You must dispose of all waste liquid here (you will need the shower key to access it).

**Supplies**      There is a supply of some non-perishable food, bin bags and barbeque coals etc. Please replace them if you use them.

Basic first aid box (in cupboards over the worktop)

12 table mats (on the shelves next to the oven).

**Waste**      The bins are located to rear of the Hut. Recycling only accept cardboard and glass (no plastic).



### Outside Area

- There are a number of outdoor items located in the hut which can be used: BBQ fishing rod, crab lines, torches, umbrellas and binoculars etc.
- There is a BBQ kit in the tall cupboard (silver rectangular box).
- If you use the BBQ, please clean it with the wire brush.
- **Do not dispose of hot coals or disposable BBQs in the bins.**
- Extra tables and chairs are stored under the bench closest to the single door. Please ensure the fabric chairs are put back in their covers before you leave.

## Do's & Don'ts



- **Smoking:** there is a strict no smoking policy in or near the hut
- **Dogs:** dogs are welcome but the beach has a very strict no fouling policy; ensure dogs are kept under control at all times and that you bring dog mess bags and dispose of it correctly.
- **Noise:** keep noise to a minimum, especially after 11pm
- **Glassware:** no glassware - bring plastic glasses or use those provided in the hut

In the unlikely event of troublemakers or thefts, please contact **Bournemouth Police on 01202 222222**.

Mudford comes under Boscombe Police you should give them the Hut number (170) and where you are.



## During your Stay

**Hengistbury Head** is a dramatic headland in Bournemouth situated to the south of Christchurch Harbour. It is an outstanding site for wildlife and archaeology and offers beautiful beaches and views across the New Forest, Isle of Wight and Purbecks.

You can find more information here <https://www.visithengistburyhead.co.uk>

**The Beach House Cafe** is situated on the harbour side of the sand spit at Hengistbury Head and enjoys stunning views across the harbour, Hengistbury Head and Mudeford Quay.

You can use the outside seating area and there are plenty of options for food & drink. Check out their menu here: <https://www.beachhousecafe.co.uk/winter-menu>



The adjoining **shop** is open from 9am – 4pm (**can close earlier if the weather is bad**) and sells a small variety of essentials, including coffee and ice-cream!

## Checking out

**Check out is at 11am** on the day you leave.

Please respect these times as the next guests may need to access the Hut after you.

We want you to feel at home and treat the Hut like it's your own. Accidents happen in day to day family life, so we don't want you to worry if the odd cup or plate gets broken – we expect a certain amount of wear and tear.

**If there have been damages** please email [hut170@elliotts.uk](mailto:hut170@elliotts.uk) so we can swiftly repair or replace for the next guests.

Please do leave the Hut as you'd expect to find it. **Before you leave, please:**

- ✓ Sweep upstairs and downstairs
- ✓ Sweep and tidy the seats/cushions
- ✓ Mop the downstairs floor
- ✓ Wipe down all surfaces
- ✓ Pack everything away
- ✓ Clean oven & hob (if used)
- ✓ Clean BBQ and dispose of coals (if used)
- ✓ Turn the gas off
- ✓ Take any perishable foods with you
- ✓ Pack away all outdoor furniture, BBQ & toys
- ✓ Shut all windows & close all curtains
- ✓ Lock all doors, place key in key lock, scramble key lock